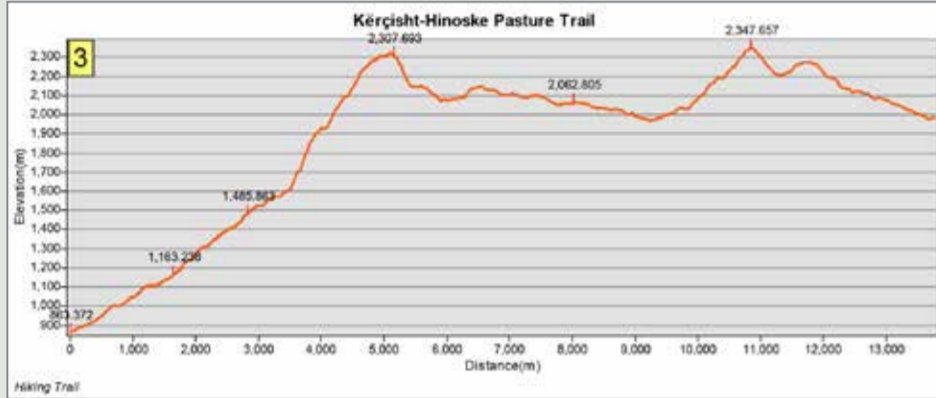
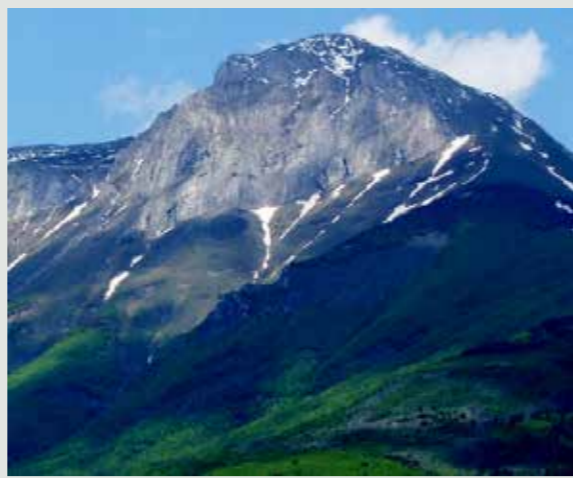


Kërçisht—Hinoske Pasture Trail

The 15.7 km trail begins in the village of Kërçisht and ends at Hinoske Pasture. The hike should take approximately 6-7 hours and the level of difficulty is rated as moderate. While passing through Kërçisht, stop and see the 250-year-old tree and spend some time in the ancient Eastern Orthodox churches of St. Demetrius and the Holy Church of Sotir. Continuing along the trail, the ascent to Mt. Kercin begins, which is situated at 2300m above sea level and ends with the Hinoske Mountains. After reaching the top, enjoy the magnificent view of the Drini Valley on one side and Mavrovo National Park in Macedonia on the other side. The highest point of this mountain range is Mt. Velivar (2375m).



Time Duration: 6-7 h (One way) Level: Moderate Length: 15.7 km



Kërçini's Source

Located in Kërçini Mountain at 1670 m above sea level, the source of clean, cold water flows from limestone rock.



Pocest Waterfall

Located on the eastern slope of the Deshati Mountain at a height of 1500 m above sea level. The picturesque 13 m high waterfall flows over a limestone rock face and into a stream. The waterfall can be viewed from a great distance and its sound can also be heard from afar.



Pocest Karst

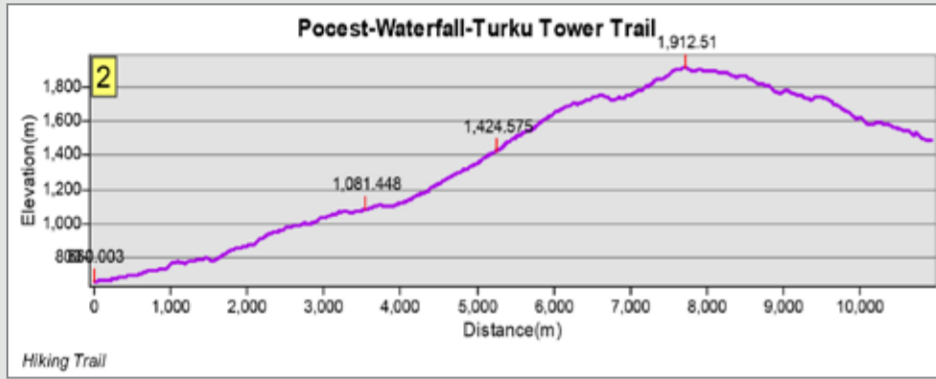
Located close to Pocest village at 1500 m above sea level. This region was formed from limestone and consists of a variety of trees including beech, maple, ash, and more.

Mt. Velivar

Located in Hinoske Pasture at 2375 m above sea level and is situated within the center of the Korab -Deshati mountain range. Mt. Velivar is naturally shaped like a pyramid and the small streams that originate from the peak flow westwards and join with the Black Drin river.



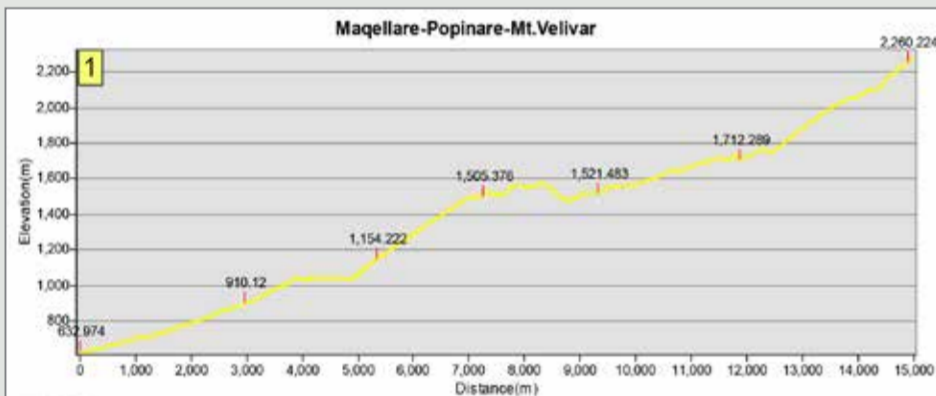
KERÇIN - VELIVAR MOUNTAINS



Time Duration: 4-5h (One way) Level: Moderate Length: 11km

Pocest-Waterfall-Turku Tower Trail

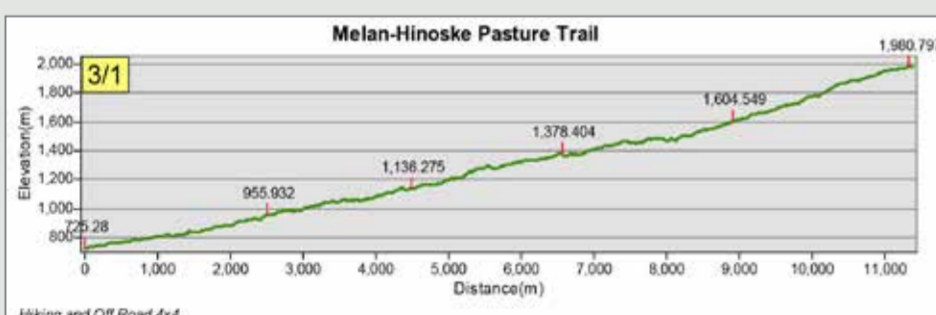
The 11 km trail begins in the village of Poceste to the waterfall and then ends at Turku tower. The hike should take approximately 4-5 hours and the level of difficulty is rated as moderate. There is a lovely meadow a short distance from the waterfall that is an ideal spot to rest and take photos. The picturesque 13 m high waterfall flows over a limestone rock face and into a stream. Take care along the trail to the waterfall as the spray can make the route a bit slippery. The end of this trail is marked by some small ruins of a tower that served as a strategic viewing point.



Time Duration: 5.6 h (One way) Level: Moderate Length: 15 km

Maqellare-Popinare-Mt. Velivar Trail

The 15 km trail begins in Maqellare through Popinare village and ends at Mt. Velivar. The hike should take approximately 5-6 hours and the level of difficulty is rated as moderate. Along the route, points of interest include: Turku Tower, Erebara Stone, and Mt. Velivar.



Time Duration: 3 - 4h (One way) Level: Easy Length: 9.4km

Melan-Hinoske Pasture Trail

The 9.4 km trail begins in the village of Melan and ends at Hinoske Pasture. The hike should take approximately 3-4 hours and the level of difficulty is rated as easy. Points of interest along the way include the quaint village of Melan, a nearby watermill, and the village of Inlice. Try and visit the pasture during early summer when the flowers are in full bloom.

Kërçisht Tree

Located in the village of Kërçisht, this 250-year-old tree stands in the center of the village at 700 meters above sea level.



The Holy Church of Sotir (Cveti Spas)

The 700-year-old church, also located in Kercisht, has a small, simple design and was built with natural stones and lime mortar. The roof was constructed with wood and covered with stone slabs. The dimensions of the interior of the church are 3.4 meters x 6.3 meters and the walls are decorated with religious iconography paintings. The altar is divided by a wooden iconostasis.



Church of St. Demetrius

Located in Kercisht, the Church of St Demetrius was built in 1892 and was constructed of limestone with a wooden roof covered with stone slabs. Inside, the walls and ceiling are covered in religious frescoes and the interior floors are stone tiles. Nearby are the ancient graves of Christian residents.

Stone of Kërçin

Located near Kërçisht village at 2000 meters above sea level. Made of limestone with a surface area of 12.5 hectares. Religious holidays of pagan origin are celebrated here.

Hinoska Pasture



Erebara Stone

It is located near Erebara village and can be reached within a distance of 5 km. It is a giant rock that stands above Erebare. The hike to the stone is around 1-2 h.



Grazhdan Castle

Located near Maqellare, Grazhdan is one of the largest forts in Albania and its strategic location linked the region of Diber with Kosovo and Macedonia. Grazhdan Castle, which comprises a total area of 34 hectares, is made of river stones and limestone and the surrounding walls of the castle are 3.5 meters wide and have an approximately 2800 linear meter perimeter, reinforced by 42 square, rectangular towers fortified with a massive "U" tower, a feature of the fourth century BC. The castle had three entrances, each of which was protected by two horseshoe-shaped towers. The southern entrance of 14 meters x 9 meters is a two-door entrance model.



Church of the Holy Transfiguration

This 12th century church is located in Herbel village. It is a small church constructed of limestone and bricks and a tiled roof. The interior is made up of a prayer room and an altar. Nearby are the ancient graves of previous Christian residents.



The Home of Tasko Markos

Located in Herbel village was built during the Renaissance period. The home of Tashko Markos has a simple four-story plan and was built by stones, mud and wood beams. The width of the wall of the tower is 0.5 meters. The door of the apartment is large with woodwork and the roof is covered with U shaped tiles.

Allajbeghi Mosque

Built in 1585, this mosque is located in the village of Maqellare. It consists of the prayer hall, and minaret. The prayer hall is 6.4 meters x 6.27 meters and the main entrance is through a gate on the north side that was built in the 1990s. The windows are rectangular with stone frames. The walls were built with gouache, bricks, and limestone. The mosque roof is dome shaped and covered in U-shaped tiles.



Professional guides are available for all trails in the Diber region. Guesthouses and camping grounds are located near the trails. Please contact the TIC for an up-to-date list of guides and specialty accommodations.

ABOUT, DIBER: TRAILS & TRADITION (D2T) PROJECT

Thanks to the "Tourism as a Leading Edge" Program, in March 2017, the Albania Local Capacity Development Foundation (ALCDF) partnered with the Municipality of Diber and the Local Action Group, Diber Turistike, to implement "Diber: Trails & Tradition" (D2T), a \$750,000 grant funded by USAID in collaboration with the Swedish Embassy in Tirana.

The three-year project's aim is to develop sustainable tourism in the Diber region of Albania by focusing on its three strategic objectives: (1) to strengthen the enabling environment; (2) to increase the workforce capabilities; and, (3) to design, develop and promote integrated agrotourism products. By April 2020, D2T envisions an increase in employment and incomes based on an increased number of tourists in Diber and the quality of their experience.

Through partnerships with businesses and local government, the project works on developing agrotourism products. By April 2020, D2T envisions an increase in employment and incomes based on an increased number of tourists in Diber and the quality of their experience.

The three-year project's aim is to develop sustainable tourism in the Diber region of Albania by focusing on its three strategic objectives: (1) to strengthen the enabling environment; (2) to increase the workforce capabilities; and, (3) to design, develop and promote integrated agrotourism products. By April 2020, D2T envisions an increase in employment and incomes based on an increased number of tourists in Diber and the quality of their experience.

TOURIST INFORMATION CENTER

Diber's official tourist information center is open year-round. It is conveniently located on the second floor of the Culture Palace, which is situated along the Linden tree-lined pedestrian boulevard. The Tourist Information Center was opened by the LAG "Dibra Turistike" and Diber Municipality, to provide visitors with a reception and information service and improve their impression of the region. Inside visitors will find friendly and knowledgeable staff who can help them discover local restaurants, book lodgings, and explore the many attractions and tours Diber has to offer!

To enable this first contact with the region, the Tourist Information Center gives visitors a personalized service through the tourist informers who provide the information, brochures and plans visitors need, in a variety of languages.



DESCRIPTION OF MOUNTAIN TRAIL OF KERÇIN - VELIVAR

The 15.7 km trail begins in the village of Kërçisht and ends at Hinoske Pasture. The hike should take approximately 6-7 hours and the level of difficulty is rated as moderate. While passing through Kërçisht, stop and see the 250-year-old tree and spend some time in the ancient Eastern Orthodox churches of St. Demetrius and the Holy Church of Sotir. Continuing along the trail, the ascent to Mt. Kercin begins, which is situated at 2300m above sea level and ends with the Hinoske Mountains. After reaching the top, enjoy the magnificent view of the Drini Valley on one side and Mavrovo National Park in Macedonia on the other side. The highest point of this mountain range is Mt. Velivar (2375m).

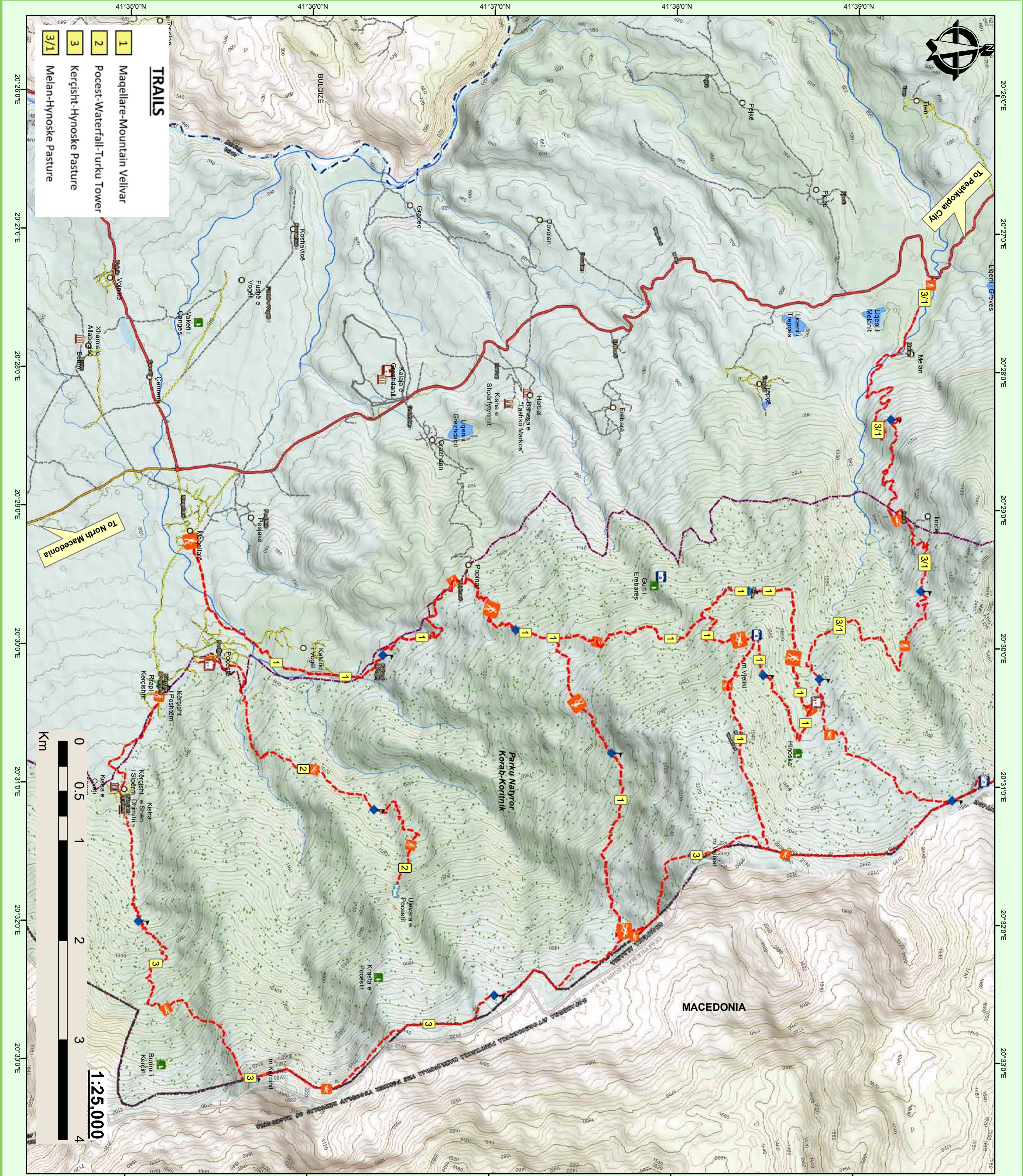


Velivar Mt. located in Hinoske Pasture at 2375 m above sea level and is situated within the center of the Korab -Deshati mountain range. Mt. Velivar is naturally shaped like a pyramid and the small streams that originate from the peak flow westwards and join with the Black Drin river.

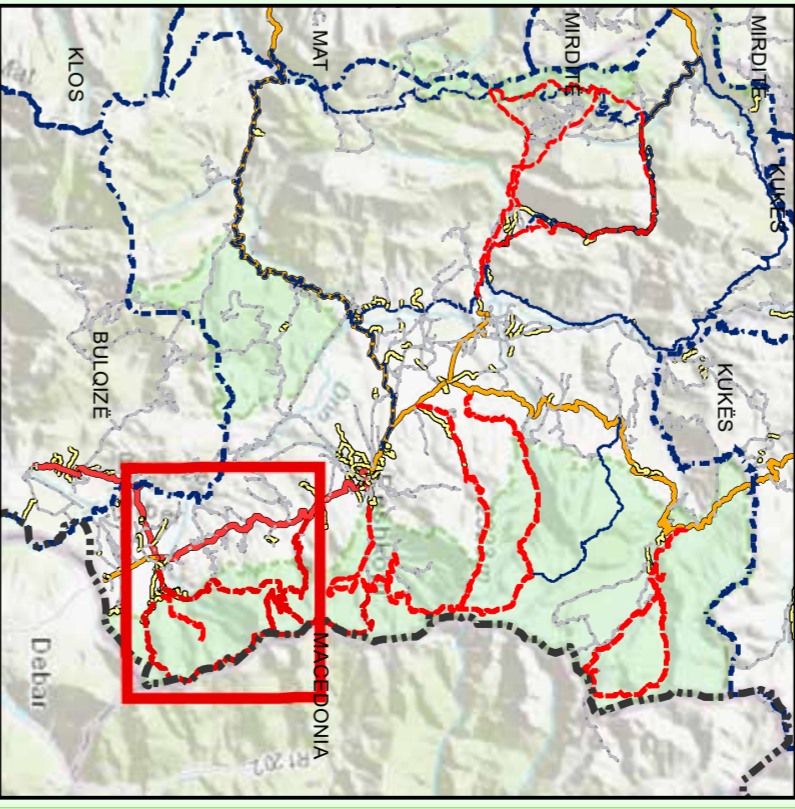
KORAB-KORITNIK NATIONAL PARK

This park includes a large territory in the two neighboring districts of Diber and Kukes with a total area of 55,550.2 hectares, of which in Diber covers an area of 20,663.4 hectares. This park consists of a high-value biodiversity with many species of trees such as pine, arnuts, fir, simple and mixed beech, oaks, hazelnut, etc. In addition to the many varieties of trees, the grass pasture vegetation is among the richest, not only in Albania but for the Balkans. The biodiversity values of this area are also enhanced by the presence of large protected mammals such as the bear (Ursus arctos), the wolf (Canis lupus), the goat (Rupicapra rupicapra), the deer (Capreolus capreolus), and the lynx (Felis lynx). This park includes 17 natural monuments





Kercisht-Himoske Pasture Trail/Shiegu Kercisht-Bjeshke e Himoskes



Legend/Shipjeqes

- Urban Area/Zone Urbane
- Cultural Monument/Monument Kulture
- Natural Monument/Monument Natyre
- View area Photo Spot/Pike Vojfimi
- Camping Site/ Vend Kampingu
- Guest House/Shepi Prifese
- Cold Spring/Burim Uji
- Waterfall/Ujevare
- Thermal Spa Center/Lixha
- Cave/Shepelle
- MA Peak/Itape Mali
- Markimet
- Hiking Trail/Shieg Edge

Road/Rruge

- Category/Kategoria
- Primary/Nacionale
- Secondary/Dycesore
- Residential/Residenciale
- Others/Te Tera
- Lakel/Upen
- Protected Area/Zone e Mbrojtur

Diber: Trails & Tradition - D2T

Financed by:



Implemented by:

