

Sohodoll-Grame Pasture Trail
 Time Duration: 6-7h (One way) Level: Moderate Length: 18.8 km

The 18.8 km trail begins at the village of Sohodoll and ends at Grame Pasture. The hike should take approximately 6-7 hours and the level of difficulty is rated as moderate. Points of attraction include: The tower of Reshit Zuna in Sohodoll and the Voles castle ruins in Vrenjt village. After passing through Vrenjt, the hiking becomes more strenuous while climbing the rocky terrain of Shllinasi. After two more hours, the trail leads to the Ladies Pasture, located at 2300m above sea level, where there are views of Peshkopi and the Curative Valley on one side and Mt. Korabi on the other side. Continuing on through Ladies Pasture, the trail leads to Grame Lake providing a lovely spot to rest and have a picnic. The hiking trail continues on to Radomire and Mt. Korab or you may turn back.

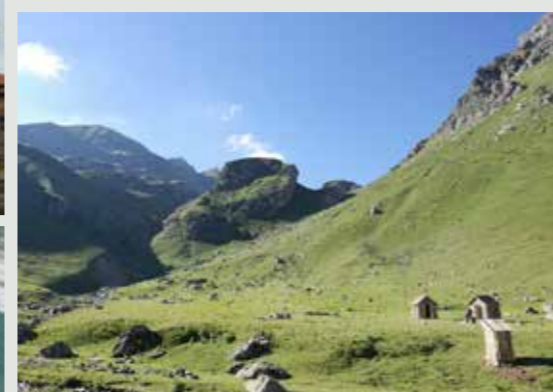
NATURAL AND CULTURAL ATTRACTIONS



Zuna Tower
 Built in 1827, the residence of Reshit Zuna, also known as Zuna Tower, is located in the village of Sohodoll. The tower is four stories high and built with stones totaling 11 m in height, while the width of the tower walls is 1 m. The tower's gate is 1.6 m tall and 0.96 m wide. There are seven windows many with iron bars and their dimensions are 1 m x 0.7 m.



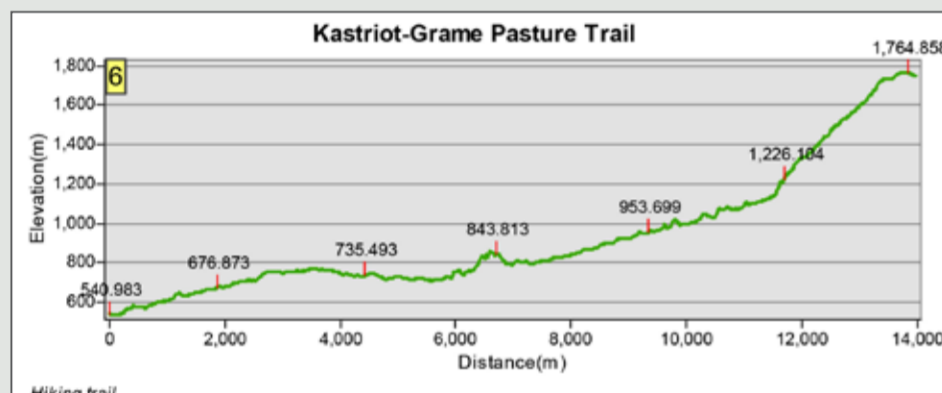
Shllinasi
 This rocky cliff of stone salt is located near the village of Vrenjt at approximately 1200-1500 m above sea level in the White Mountain. It's 200 m high and 250 m wide and is popular with goat herds that can be seen licking the salt.



The Ladies Pasture
 Located close to Mount Korab northeast of Peshkopi and situated 1700 m above sea level. It constitutes a big glacial slope, which is formed in schist, 1000 m long and 100-180 m wide. It has an irregular quadrilateral form and a big natural balcony. It is rich with herbaceous vegetation (alpine pastures) that are used continuously by herds for grazing. It can be visited if you follow the trail from Peshkopi to the villages in the northeast and then walk along the northwest slope of Korab-Deshat range.



Zimur Pasture
 Located within the Korabi mountain range at 1700 m above sea level. It consists of a natural alpine grassy balcony that is 1000m long and 100-180m wide. It is rich with herbaceous vegetation (alpine pastures) that are frequently used by animals for grazing purposes.



Kastriot-Grame Pasture Trail
 Time Duration: 4h (One way) Level: Hard Length: 14 km

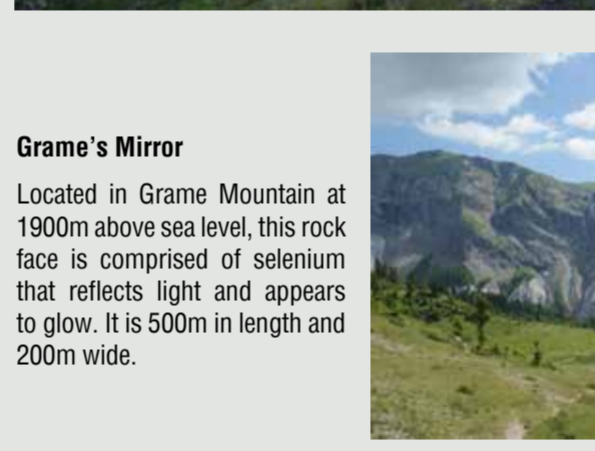
The 14 km trail begins at Chestnut Hill (Kodra e Geshtenjes) in the village of Kastriot and ends at Grame Pasture. The hike should take approximately 4 hours and the level of difficulty is rated as hard. For the first 1.5 hours of hiking the trail is easy. The remaining length of the trail is more difficult as it leads to the Ladder of Rrafmane (Shkalla Rrafmane) and then to Grame Pasture and Lake. Along the way, enjoy the beautiful scenery and points of attraction such as White Mountain and Grame's Mirror, which is rockface made of selenium that sparkles in the sun.



Grames' Lake
 Lake of Grame is found in the Grame Mountain, situated in the eastern Korab Mountains. It is a glacial lake with very cold and crystal clear water. Its surface freezes during winter. It is also the largest (5 ha) and deepest lake within the mountain range. The lake is located 1750 meters above sea level. The shores are steep and rocky. It takes water from rainfall and snowfall. The biggest amount of water can be observed in the late spring, which is due to melting of the snow on the surrounding peaks



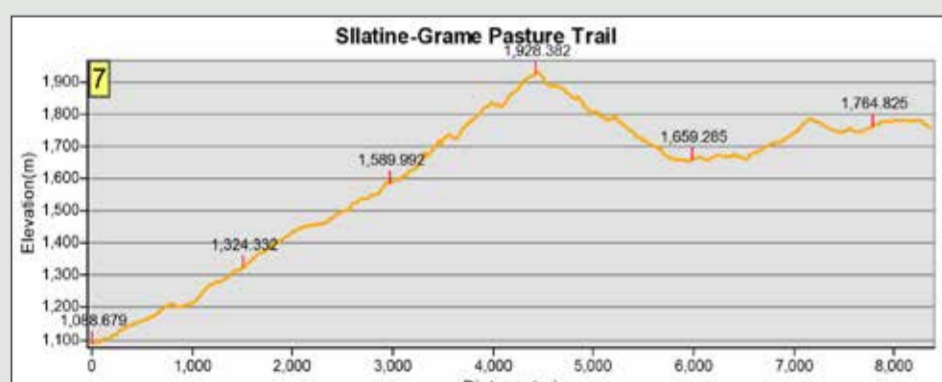
White Mountain's Karst
 This rocky cliff face, which is comprised of gypsum, was formed during the Permian and Triassic Periods. A wonderful landscape was formed with a dominant white color and includes a few relatively unexplored caves.



Grame's Mirror
 Located in Grame Mountain at 1900m above sea level, this rock face is comprised of selenium that reflects light and appears to glow. It is 500m in length and 200m wide.



Source of Vlesha's Cold Water
 This cold water source is located near the village of Vlesha and is 800m above sea level. The cold, clean water flows through the limestone and schist rock

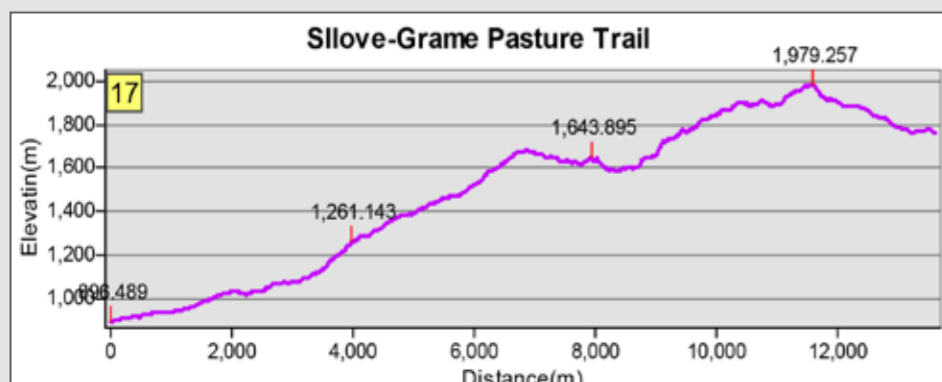


Slatine-Grame Pasture Trail
 Time Duration: 3-4h (One way) Level: Moderate Length: 8.3 km

The 8.3 trail begins at the village of Slatine and ends at Grame Pasture. The hike should take approximately 3-4 hours and the level of difficulty is rated as moderate. The trail leads to Pelpeniku peak and the hiking becomes more strenuous while climbing the rocky terrain. Points of attraction such as White Mountain and Grame's Mirror can be seen along the route



Grame Pasture
 Located near Slatine village and situated at 1800m above sea level, this pasture is 1200m long and 230m wide. Within this pasture, locals know as: Dyqakë Pasture and Shehi Pasture, and they are among the biggest and most beautiful, with numerous water sources and plants.



Silove-Grame Pasture Trail
 Time Duration: 4h (One way) Level: Moderate Length: 13.6km

The 13.6 km trail begins at the memorial statue of Silove and ends at Grame Pasture. The drive should take approximately 4 hours, while the hike should take up to 8 hours following the same path and the level of difficulty is rated as moderate. Points of attraction such as White Mountain, Grame's lake and Grame's Mirror can be seen along the road.



Camping in Grame
 Professional guides are available for all trails in the Diber region. Guesthouses and camping grounds are located near the trails. Please contact the TIC for an up-to-date list of guides and specialty accommodations.



GRAMA PASTURE

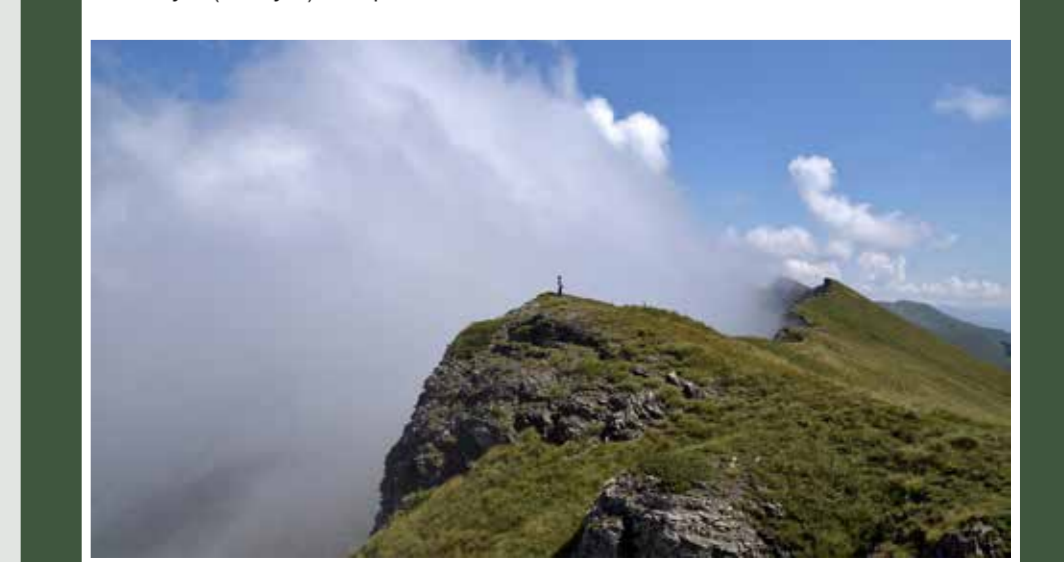


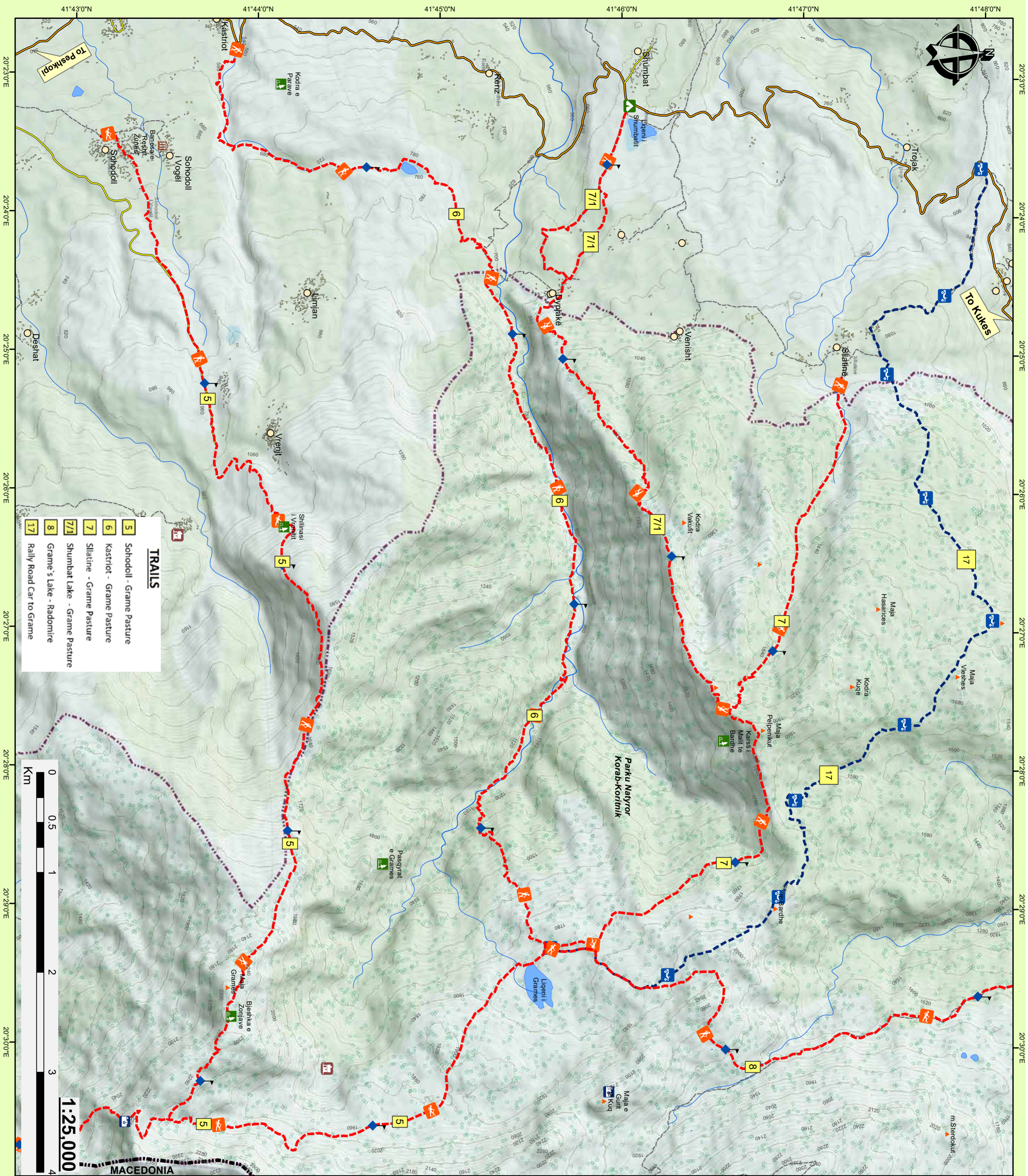
ABOUT, DIBER: TRAILS & TRADITION (D2T) PROJECT
 Thanks to the "Tourism as a Leading Edge" Program, in March 2017, the Albania Local Capacity Development Foundation (ALCDF) partnered with the Municipality of Diber and the Local Action Group, Diber Turistike, to implement "Diber: Trails & Tradition" (D2T), a \$750,000 grant funded by USAID in collaboration with the Swedish Embassy in Tirana.
 The three-year project's aim is to develop sustainable tourism in the Diber region of Albania by focusing on its three strategic objectives: (1) to strengthen the enabling environment; (2) to increase the workforce capabilities; and (3) to design, develop and promote integrated agritourism products. By April 2020, D2T envisions an increase in employment and incomes based on an increased number of tourists in Diber and the quality of their experience.
 Through partnerships with businesses and local government, the project works on developing and market eco-friendly, natural, cultural and agro-tourism attractions, such as hiking and biking trails; improve traditional guesthouses and villages; introduce self-sustaining energy and waste management systems; improve tourist infrastructure; and train local tour guides.



DESCRIPTION OF MOUNTAIN TRAIL OF GRAMA
 Endless highland pastures, alpine trees, and a beautiful mountain lake that faces the White Mountain and Grama's Mirrors, with cottages and crystal-clear springs, Grama is a magical mountain destination, located 9 km away from Peshkopi. Cottages and camping sites offer food and accommodation but also tourist activities such as hiking, fishing, hunting, horseback riding.
 Grama is accessible by several routes. On foot, visitors can hike from the village of Kastriot or from Shumbat village. By car, visitors can travel to Grama from Peshkopi to the villages of Bahute or Zimur (40 minutes), then hike to Grama (2.5 hours). And by off-road vehicle, visitors can reach Grama via the village of Slatina (1.5- 2 hours).

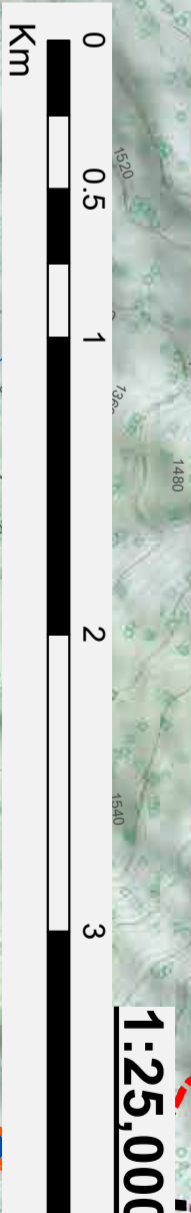
KORAB-KORITNIK NATIONAL PARK
 This park includes a large territory in the two neighboring districts of Diber and Kukes with a total area of 55,550.2 hectares, of which in Diber covers an area of 20,663.4 hectares. This park consists of a high-value biodiversity with many species of trees such as pine, arnuts, fir, simple and mixed beech, oaks, hazelnut, etc. In addition to the many varieties of trees, the grass pasture vegetation is among the richest, not only in Albania but for the Balkans. The biodiversity values of this area are also enhanced by the presence of large protected mammals such as the bear (Ursus arctos), the wolf (Canis lupus), the goat (Rupicapra rupicapra), the deer (Capreolus capreolus), and the lynx (Felis lynx). This park includes 17 natural monuments





TRAILS

5	Sohodoll - Grame Pasture
6	Kastriot - Grame Pasture
7	Silahine - Grame Pasture
7/1	Shumbat Lake - Grame Pasture
8	Grame's Lake - Radomire
17	Rally Road Car to Grame



USAID
FROM THE AMERICAN PEOPLE

Sweden Sverige

Implemented by:

Diber: Trails & Tradition - D2T

AAAMANA LOCAL CAPACITY DEVELOPMENT FOUNDATION

Legend/Shipjeqes

Urban area/Zone urbane	Hiking Trails/Sheq Ege
Cultural Monument/Monument Kulture	Markimet
Natural Monument/Monument Natyre	Off-Road 4x4/ Rouge e Pashtuar 4x4
View area Photo Spot/Plaq Vojinini	Road/Rruqe
Camping Site/ Vend Kampingu	Primary/Nacionale
Guest House/Sheq Priftese	Secondary/Dyvesore
Cold Spring/burim Uji	Residential/Residenciale
Waterfall/Jequare	Ohesrte Tera
Thermal Spa Center/Lixha	Lakeliqen
Cave/Shipelle	Mountain Bike Trails/Sheq Bikelash Mail
Mt Peak/Kllaje Mail	Protected Area/zone e Mbrojtur

